



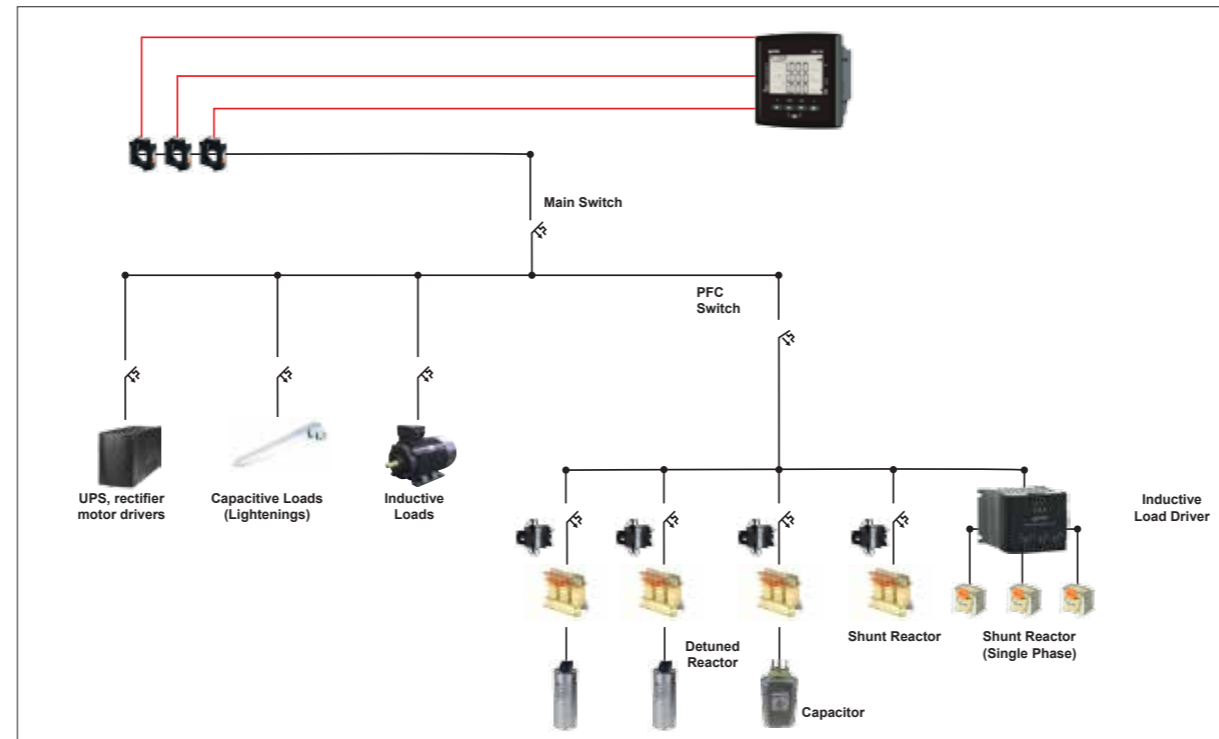
| | RGP-9 | RGP-9S | RGP-12 | RGP-12S | RGP-12SR | RGP-15SR |
|-----------------------------|---------------------------------------|------------|--------|---------|------------|----------|
| STEPS | | | | | | |
| Number of steps | 9 | | 12 | | 9+SVC | 12+SVC |
| SUPPLY | | | | | | |
| Supply Voltage (Un) | 100-270(-15%+10%)VAC/VDC | | | | | |
| Operating Frequency | 45~60 Hz | | | | | |
| MEASUREMENTS | | | | | | |
| Measurement Accuracy | %0.5(V,I,W,VAr,VA),%0.02(Hz,Cosθ) | | | | | |
| Delay Time | 1-1800 sec | | | | | |
| THDV Setting Limits | %0 - 100 | | | | | |
| SCREEN | | | | | | |
| Active Area | 16:10 Segment LCD | | | | | |
| Color | RGB | | | | | |
| OPERATING | | | | | | |
| Operating Temperature | -20 +70°C | | | | | |
| Max. Humidity | %95 | | | | | |
| MOUNTING | | | | | | |
| Mounting Type | Panel Mounting | | | | | |
| Cut-out Dimension | 138x138mm | | | | | |
| Max. Depth (Panel Inside) | 60mm | | | | | |
| COMMUNICATION | | | | | | |
| | - | Modbus RTU | - | | Modbus RTU | |
| TECHNICAL DIMENSIONS | | | | | | |
| Dimensions (HxWxD) | 144 x 144 mm | | | | | |
| IP Protection | IP 54 (Front Face), IP 20 (Rear Face) | | | | | |

Every thing is OK,
No Problem...



Warning,
You should
Check-up!

Alarm,
Check-up
Immediately!!!



New Face of PFC

Easy Way to Display PFC Status

Thanks to patented Smiley Mode, ENTES RGP new generation power factor controllers tell the PFC status without going to near the device.



RGP SERIES POWER FACTOR CONTROLLERS

| Product Code | Order Code | SVC | Max. Number of Step | Shunt Reactor | 1Phase 1 Current | 3Phase 3 Current | Single Power Capacitor | Three-Phase Power Capacitor | V, I, Cosφ, W, Var, VA | $\sum W$, $\sum VAR$, $\sum VA$ kWh, kVAh | %THD1, THDV | RS-485 Communication | Generator 2nd Cosφ | 85-300V (Aux Supply Voltage) |
|--------------|------------|-----|---------------------|---------------|------------------|------------------|------------------------|-----------------------------|------------------------|---|-------------|----------------------|--------------------|------------------------------|
| RGP-9 | M3986 | | 9 | | | | | | | | | | | |
| RGP-9S | M3987 | | 9 | | | | | | | | | | | |
| RGP-12 | M3989 | | 12 | | | | | | | | | | | |
| RGP-12S | M3990 | | 12 | | | | | | | | | | | |
| RGP-12SR | M3988 | | 9+SVC | | | | | | | | | | | |
| RGP-15SR | M4077 | | 12+SVC | | | | | | | | | | | |



SVC SOLUTION INDUCTIVE LOAD DRIVERS

| Product Code | Order Code | Power (kVAR) | Shunt Reactor Number | Shunt Reactor Type | Operating Voltage (V) | Connection Type | Dimensions (mm) | Weight (kg) |
|--------------|------------|--------------|----------------------|----------------------|-----------------------|-----------------|-----------------|-------------|
| SR-05E | M3757 | 5 | 3 | Monofaze (tek fazlı) | 230 | Yıldız | 119x121x92 | 0,9 |
| SR-10E | M3756 | 10 | 3 | Monofaze (tek fazlı) | 230 | Yıldız | 119x121x152 | 1,4 |
| SR-20E | M3904 | 20 | 3 | Monofaze (tek fazlı) | 230 | Yıldız | 119x167x337 | 2,29 |
| SR-30E | M3914 | 30 | 3 | Monofaze (tek fazlı) | 230 | Yıldız | 119x167x337 | 3,18 |



SVC SOLUTION SHUNT REACTORS

| Product Code | Order Code | Power (kVAR) | L (mH) | Irms (A) | Weight (kg) | Dimensions (mm) |
|-------------------|------------|--------------|--------|----------|-------------|-----------------|
| ENT.SRS1.230/1,66 | M3784 | 1,66 | 101 | 7,22 | 9,3 | 150 x 123 x 145 |
| ENT.SRS1.230/3,33 | M3783 | 3,33 | 50,02 | 14,48 | 20,8 | 192 x 163 x 187 |
| ENT.SRS1.230/6,67 | M3878 | 6,67 | 25,3 | 40 | 24,3 | 240 x 125 x 305 |
| ENT.SRS1.230/10 | M3913 | 10 | 16,84 | 43,48 | 32,4 | 240 x 145 x 305 |

Less Investment and Maintenance Cost via Less Step Options

RGP series power factor controllers designed to provide optimum power factor correction from low number of steps.

Solution with less number of steps means you need less number of power capacitor, contactor etc. So less investment and maintenance cost can be provided with RGP.



PFC Solution In Every Condition Via SVC Support

SVC versions of RGP provide perfect power factor correction for both inductive and capacitive loads with using inductive load driver and monofaze shunt reactors.

Tutorial Mode Which Is The First Sectoral Application.

RGP series power factor controllers give information about device usage on "Tutorial Mode". In other words, RGP carries the user manual on inside.



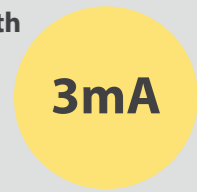
Interactive Communication with Notifications

Critical alarms about PFC, power quality and communication are showed on notification screen in order to importance like a social communication platforms that you used to.



Sensitive Measurement Starting with 3mA

RGP series offer sensitive power factor correction even for minimum loads with opportunity to use power capacitor starting from 0,5 kVAR .



Big and Legible Displays via Wide LCD

16:10 format wide screen LCD is very important for ENTES's new design approach to display legible measurement parameters on screen.

